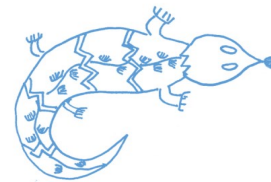




Bunmurra Byala



Here, there, everywhere. Blue Tongue Lizard talk

24 February 2022

Dear Hazelbrook parents and carers,

We have had another fantastic week at Hazelbrook Public School, with Meet the Teacher Zoom meetings, our first P&C meeting for the year, and some outstanding effort in learning occurring in classrooms. I have loved visiting Stage 2 classrooms this week and seeing some deep mathematical thinking occurring, as students focus on problem solving. I have been very impressed by some of our Stage 1 students as they expand their vocabularies, and include new and sophisticated words in their writing. Our kindergarten students have settled in beautifully to school, and have already learned so many new things, including the names of their new friends! Stage 3 have really done an outstanding job in stepping up and leading our school, as they take on extra responsibilities and think about how we can make our school an even more amazing place to learn. What a privilege it is to work with these incredible students and teachers every day.

Natalie Bourke

Principal

Hazelbrook Public School

STUDENT LEADERSHIP

Our amazing student leaders held their first fundraiser for the year this week, and we celebrated 2s Day (Tuesday 22.2.22) by dressing up and getting into the spirit of the day. Thank you so much to our families who made a donation on the day. We raised \$385.35, which will be used to purchase games for students to play when we have wet weather play. What a great start to the year for our student leaders!



2022 Term Dates

Term 1

Tuesday 1st February: Years 1-6 Students return to School

Thursday 10th February: Kindergarten starts school

Friday 8th April: Last day of term

Term 2

Wednesday 27th April: Students return to school

Friday 1st July: Last day of term

Term 3

Tuesday 19th July: Students return to school

Friday 23rd September: Last day of term

Term 4

Monday 10th October: Students return to school

Monday 19th December: Last day of term

Upcoming Events

Week 5:

Friday 25 February—Stage 2 access to Book Fair

Week 6:

Monday 28 February—Stage 3 access to Book Fair

Tuesday 1 March—Kindy (ES1) access to Book Fair

Wednesday 2 March—Stage 1 access to Book Fair

Thursday 3 March—Investiture Assembly (invitations to come home for students being inducted into leadership positions)

Week 7:

Thursday 10 March—Selective High School test (Year 5)

Thursday 10 March-Thursday 17 March: Life Education

Hard copy notes sent home

Week 4:

Scholastic Book Fair—All classes

Reading at Home—K-2 only

Healthy Harold permission note—all classes

High school EOI 2023—Year 6 only

Week 5:

Best Start reports—Kindy (ES1)

Friendship lists—Kindy (ES1)

Please see Sentral Parent Portal for these notes and all other current communications

BOUNCE BACK

Hazelbrook PS has introduced a new, school-wide wellbeing and resilience program this year called Bounce Back. Teachers have undertaken professional learning in delivering this excellent program, and have started implementing the program in classes. Over the coming weeks and months, you may hear your children talking about values, bouncing back, courage, looking on the bright side and other aspects of the program.

We will include information in each newsletter to allow parents and carers to talk to their children about what they are learning and practising at school. This week, we have an introduction to Bounce Back to give you an idea about what the program will cover. Please have a conversation with your child about how this can help us all in our everyday lives.

An introduction to Bounce Back!

The *Bounce Back!* wellbeing and resilience program teaches children the skills and attitudes to help them be in a positive mood most of the time, get along well with others and become more resilient. It uses literature as a starting point for discussions and follow-up activities. Ten coping statements are a core part of the program (see below).

The program can help your child to get better at:

- using helpful thinking when faced with a problem or a difficult situation
- thinking more optimistically, i.e. expecting bad times to get better
- understanding that everyone has setbacks and difficulties, not just them
- talking to people they trust so they get a reality check on their thinking
- being brave and facing their fears
- enhancing their own wellbeing
- feeling and expressing gratitude
- boosting their positive emotions
- managing uncomfortable emotions and turning a bad mood into a good mood
- getting along with others, making and keeping friends and dealing well with disagreements
- setting goals, being resourceful, developing a growth mindset and not easily giving up
- being kind, fair, honest, friendly, cooperative, responsible, and accepting of differences
- using humour in a helpful, not a harmful way
- identifying, applying and extending their ability and character strengths
- respecting other people and not bullying others.

You can help your child get the best out of their involvement with *Bounce Back!* if you reinforce the key messages they are learning.

◆ Bounce Back! stands for:

Bad times don't last. Things always get better. Stay optimistic.

Other people can help if you talk to them. Get a reality check.

Unhelpful thinking makes you feel more upset. Think again.

Nobody is perfect – not you and not others.

Concentrate on the positives (no matter how small) and use laughter.

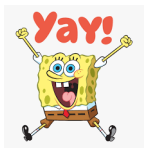
Everybody experiences sadness, hurt, failure, rejection and setbacks sometimes, not just you.
They are a normal part of life. Try not to personalise them.

Blame fairly. How much of what happened was due to you, to others and to bad luck or circumstances?

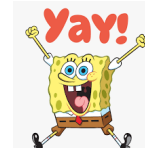
Acept what can't be changed (but try to change what you can change first).

Catastrophising exaggerates your worries. Don't believe the worst possible picture.

Keep things in perspective. It's only part of your life.



COVID-SAFE GUIDELINE CHANGES



By now, you will have heard the VERY welcome news that Covid-safe guidelines are being changed as of next Monday 28 February. We are so happy to be able to plan for this much-awaited change! As indicated in our note home to families yesterday, from Monday the following changes will be in place:

- We will move to **symptomatic RAT testing**. If your child has any symptoms, or has a child in their Stage that has tested positive, then we ask you to test. Students have received their first supply of tests today. If you need more, please contact the school office.
- **Visitors will be allowed back on to the school site**. Any helpers in classrooms or the canteen will need to be double vaccinated. Please ask your child's teacher or at the office if you have any questions regarding this.
- **If you need to visit the school during the school day, please go to the Kiss and Drop gate on Hazelbrook Pde and call the school office on 4758 6120**. We will help you from there.
- **Students will no longer be cohorting**. This opens up many opportunities for working and playing together. It also means we can start meeting for assemblies, which we are so excited about. Information about assemblies will be coming home soon.
- **Drop off and Pick up**: students can arrive and leave from any gate. Please make sure that your child is aware of the gate they should use each day. For young students or those who need extra reminders, please record this on a tag on their school bag. **Siblings will still be able to meet at the quad before leaving each day**.
- **Parents or carers who wish to pick up their children from within the school site** can do so from the quad (please do not go to the classroom). Gates will be locked during the day for student safety, but will be opened at 2.50pm to allow parents and carers to enter to collect their children.
- Masks remain mandatory for staff until March 7. Following this, mask wearing will be a personal choice for staff and students

KISS AND DROP

We are so lucky to have a dedicated Kiss and Drop zone at Hazelbrook PS. Please remember that when you are dropping off or picking up students, you need to pull up to the front of the zone, even if there are no cars behind you. It is amazing how quickly this area becomes congested when a few cars arrive at the same time!

Please make sure your child is ready when you pull up to drop off, so that they can get out of your vehicle quickly and safely. Cars need to move on within two minutes of arrival. Please remind your children that this is not the time to put on shoes or do hair!



STUDENTS ON BUSES

Many of our students catch the bus to and from school each day. This is a fantastic service to the community. Unfortunately, we have had a number of reports about inappropriate behaviour on the bus by a number of students. If your child catches the bus, could you please talk to them about ensuring that they board the bus quickly and safely, sit down and remain seated, and use appropriate language when they are on the bus. Please also ask your child to let their teacher know if there are any issues on the bus, so that we can follow up with our students and families.



Hazelbrook P.S Canteen **Term 1- 2022** - This menu supersedes all others
www.quickcliq.com.au
 The canteen is not for profit run by the P&C, Volunteers always welcome

Menu

Everyday food choice = **Hot Food \$5 each**

- Available all breaks**
- Bliss Balls .50
 - Seasonal Fresh Fruit from .50
 - Savoury Snack (cheese, crackers, dried apricots) \$1.00
 - Home Baked Biscuits .50
 - Pasta Cup \$1.20
 - Pasta Bowl (Can be ordered for lunch) \$3.00

- Drinks**
- Hot Milo (before school & recess only) \$1.50
 - Water \$1.00
 - Juice (Apple, Apple Black Currant, Orange) \$1.50
 - Milk (Strawberry, Chocolate) \$2.00
 - Plain Milk \$1.00
 - Up & go \$2.40

- Snacks**
- Home Air Popped Pop Corn .50
 - Frozen Orange Wedge .20
 - NEW!** Fruit Jelly cup .60

- Frozen**
- Frozen Juice Cup (Orange, Apple Blackcurrant) \$1.00
 - Quelch Ice Block .50
 - Frozen Fruit from .20

- Monday, Tuesday and Wednesday Choice of Bangers & Mash & Veg Mac & Cheese (V) optional Ham with salad or corn or Homemade pizza (GF\$1 extra), V topped with ham, capsicum, pineapple & cheese with salad or corn or Mango chicken & vegetable GF, DF Served with rice and mini nan**
- Thursday Beef & Bean Nachos or Bean Nachos GF, V, DF with tortilla chips and cheese.- Sour Cream .50c Extra**
- Friday BURGERS -Homemade Chicken lettuce tomato mayo or Homemade Beef, lettuce tomato BBQ sauce or Vegetarian lettuce tomato. (GF\$1 Extra), V, DF**

- Sandwiches & Wraps**
- Vegemite, Honey, Jam \$2.00
 - Cheese \$2.70
 - Ham or Diced Chicken \$3.20
 - Salad \$3.50
 - Ham/Chicken & Salad \$4.20
 - Have toasted
 - On a wrap Extra \$1.00
 - Extras- for Sandwiches and Burgers**
 - Lettuce Tomato, Cucumber, Carrot, Cheese, Pineapple, Beetroot. .40c Each

- Salad Box**
- Tomato, Cucumber, Carrot, Cheese, Pineapple, Beetroot, Lettuce \$5 (Ham or Chicken)
- WASHY WASHY**
\$1 treats at the canteen

NEW! A variety of seasonal snacks available over the counter NEW!
 Canteen open 8:30 -1:50 Monday to Friday
 Please use a separate bag for recess and lunch orders with name and class clearly on bag - No envelopes.

CANTEEN

Our canteen is open Monday-Friday for online orders for K-6 and for counter service for Year 1-6 students across all cohorts. Food served at the canteen is made fresh on site and is not only delicious, but is healthy too! So, why not give yourself a break from making lunches and make an order today.

Updating family records

If your family details have changed in any way, you can update your details via the Sentral parent Portal, email to the school or call the Office anytime.

It is vital we keep accurate records at all times in case of emergencies or needing to contact families.

Thank you for your attention to this matter

CAN YOU HELP YOUR P&C IN 2022?

GARDEN FESTIVAL CO-ORDINATORS

After 2 years of disappointing COVID cancellations, we hope to run our major fundraiser - the Mid Mountains Garden Festival in 2022.

The festival is in September, but we need a couple of co-ordinators appointed now so we can plan the event. Without co-ordinators we sadly will not be able to run the festival this year.

No gardening knowledge is needed, but organisational skills and the ability to work well with a broad range of community members are important.

We'd also welcome anyone who might like to get involved on the organising committee for this wonderful community event.

ELECTION BBQ ORGANISER

There will be a Federal election held on a Saturday sometime in April or May this year. We'd love to offer a democracy sausage to Hazelbrook locals and do a bit of fundraising for our school. Could you help us out by organising the day for us?

It's a fun day and a great way to help out without taking on an ongoing commitment.

CANTEEN HELPERS

The P&C runs the canteen as a not for profit service to the school community. We need volunteers to keep our canteen running smoothly.

Any day of the week - a helper from 10AM til 11.30 AM is great.

On Fridays - a helper from 10AM til 1.30PM is a huge help.



KEEN TO HELP?

Please email us -
hazopandc@gmail.com

PBL Winner Week 5

I am responsible if... I use the toilets in break times

ES1

Name	Class
Lucas	K/1R
Zoe	K/1R

Stage 1

Name	Class
Macie	1/2P
Skyla	1/2P
Toby	1/2L
Maddison	1/2P
Seb	K/1R
Delia	K/1R

Stage 2

Name	Class
Lewis	3/4H
Chelsea	3/4M
Isabel	3/4L
Tyler	3/4M

Stage 3

Name	Class
Penny	5/6S
Isabella	5/6S
Raiden	MAC M
Saffron	5/6S



Thursday February
24, 2022:4pm

2022 Year 6 Twilight Expo

for students, parents and caregivers

Springwood High School would like to warmly invite current Year 6 students, their parents and caregivers to the Year 6 Expo, taking place from **4pm on February 24, 2022 in the Springwood High School Hall**. The evening will commence with a welcome by the Principal, Mr Stuart Harvie, and will provide guests with opportunities to meet key staff. Following the welcome, SRC students will facilitate tours of the school to showcase the fantastic facilities, resources and specialist spaces in our vibrant school. There will be opportunities to witness High School students in action in their classrooms, and staff will be available to answer questions about our school.

The event is COVID safe. All parents and students will need to wear a mask to the event. Provisions will be in place for regular hand sanitising. No one should attend the event with cold/flu symptoms.

for more information contact the school on 47512111
or springwood-h.school@det.nsw.edu.au

PM1927284




RAISING KIN
grandparents relatives
and kinship carers

Raising Kin is a support group for grandparents, relatives and kinship carers who care for a child who is a relative. This group meets on the first Wednesday of the month during school term.

TERM 1 2022 DATES:
Wednesdays
FEB 2 MARCH 2 APRIL 6

10:00AM-12:00PM

VENUE:
FAULCONBRIDGE COMMUNITY HALL
9-9A HOME STREET
FAULCONBRIDGE

For more information or to RSVP
please contact
Jenny on 0450 001 393

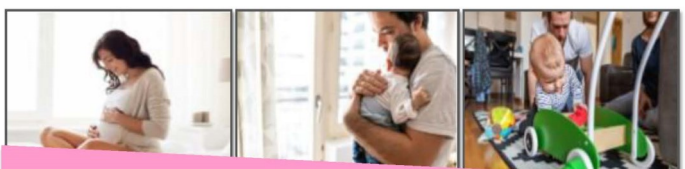
Striving for a community that is vibrant, caring and inclusive

Springwood Neighbourhood Centre
www.sncc.org.au
reception@sncc.org.au
02 4751 3033
facebook.com/springwoodneighbourhoodcentre

Gateway Family Services
(An activity of Blaxland Uniting Church)



Presents...



**Bringing Up Great Kids
in the First 1000 days
Parenting Program**

**Exploring your child's
development in their early years**

**Come along to our
6 Week Parent Program!**

For parents and caregivers with children
aged from 0 – 2 years old

Learn more about

- Your parenting journey and recognising the importance of a positive start in life;
- How babies' brain development influences their thoughts and feelings;
- Tune in to your baby's social, emotional, physical and cognitive development;
- How to overcome obstacles to being the parent you would like to be;
- Exploring ways to care for yourself and to find support when you need it.

LOCATION: Blaxland Uniting Church (rear Hall)
70 Old Bathurst Road, Blaxland

WHEN: Monday 21st February – 28th March, 2022

TIME: 7:00pm – 9:00pm

COST: Donation

Register at Gateway: 0490 662 498

NO CHILDCARE AVAILABLE



Gateway encourages, supports & respects diversity in families & communities. Our Groups are open to everyone.

Approaching the school

CONCERN	APPROPRIATE ACTION	WHO
The academic progress of your own child	<ul style="list-style-type: none"> Directly contact the child's teacher either by note, by phone or at an appropriate time to discuss any issues. 	Classroom Teacher
The welfare of your own child	<ul style="list-style-type: none"> For minor issues directly contact your child's teacher to clarify information. 	Classroom Teacher
	<ul style="list-style-type: none"> For more serious concerns, contact office. State nature of concern and arrange a suitable time to talk with class teacher or appropriate staff member. 	School Office 4758 6120
	<ul style="list-style-type: none"> To convey information about change of address, telephone number, emergency contact, custody details, health issues etc. Please contact the office. 	School Office 4758 6120
Actions of other students	<ul style="list-style-type: none"> Contact the class teacher for a classroom problem. 	Classroom Teacher
	<ul style="list-style-type: none"> Contact the Assistant Principal for your child's stage. 	AP ES1 & S1 = Lesley Lowe AP S2 = Michelle Schmidt AP S3 = Kerrie Holliday
School policy or practice	<ul style="list-style-type: none"> Contact office. State nature of concern and make an appointment to see the appropriate member of staff or assistant principal. 	School Office to make an appointment
Actions of a staff member	<ul style="list-style-type: none"> Contact the teacher directly or their supervising Assistant Principal for an appointment. 	Classroom Teacher or the appropriate Stage Assistant Principal
	<ul style="list-style-type: none"> Contact Principal if matter relates to an Assistant Principal's actions 	Natalie Bourke, Principal



School Community Charter

Collaborative. Respectful. Communication.

The following School Community Charter outlines the responsibilities of parents, carers, educators and school staff in NSW public schools to ensure our learning environments are collaborative, supportive and cohesive.

What our schools provide

NSW public schools work to create positive environments for students, staff and the entire school community that support student learning. We strive to ensure that every student is known, valued and cared for.

The best education happens when parents and schools work together.

The School Community Charter aligns with the NSW Department of Education Strategic Plan 2018 - 2022.



Positive environments

It is important that our NSW public schools are positive environments and that parents and carers are kept informed of students' progress and school announcements.

Parents and carers can expect:

- To be welcomed into our schools to work in partnership to promote student learning.
- Communication from school staff will be timely, polite and informative.
- Professional relationships with school staff are based on transparency, honesty and mutual respect.
- To be treated fairly. Tolerance and understanding are promoted as we respect diversity.

We treat each other with respect

We prioritise the wellbeing of all students and staff

Unsafe behaviour is not acceptable in our schools

We work together with the school

Ensuring respectful learning environments for all members of NSW Public Schools communities.

© NSW Department of Education



We create collaborative learning environments

We all play our part

We work in partnership to promote student learning

Communicating with our schools

Our staff will find a time to talk to you when they can give you their full attention. Please remember that while our staff are in class or dealing with other matters, they may not be available to answer your questions immediately.

Our schools and communities will make sure that written communication is appropriate, fair and easy to read. We encourage you to use email and social media appropriately to connect with your school and stay up-to-date with up-coming events in the school community.

Our guide for parents, carers and students provides useful information about the complaints process: education.nsw.gov.au/about-us/rights-and-accountability/complaints-compliments-and-suggestions/guide-for-parents-carers-and-students.

Respectful communication is a right

In all workplaces people have the right to feel respected. Unacceptable and offensive behaviour has no place in our school communities.

To ensure the wellbeing of students, staff and the community in our schools, steps will be taken to address unacceptable behaviour. This may include restricting contact with the school community or, in more serious cases, referral to NSW Police.

Unacceptable behaviour may include but is not limited to:

- Aggressive or intimidating actions, such as violence, threatening gestures or physical proximity.
- Aggressive or intimidating language, including the use of obscenities, making sexist, racist or derogatory comments or using a rude tone.
- Treating members of the school community differently due to aspects such as their religion or disability.
- Inappropriate and time wasting communication.



Collaborative. Respectful. Communication.

School Community Charter
education.nsw.gov.au